



**North Sea Regatta**

*Jachtclub Scheveningen*

# NOTICE OF RACE

North Sea Regatta 2026

Fleet B



**North Sea Regatta**

photo: Sander van der Borch



# NOTICE OF RACE

## **North Sea Regatta 2026 Fleet B**

Organizing Authority: Jachtclub Scheveningen

Saturday May 23 - Monday May 25, 2026

North Sea, Scheveningen, The Netherlands

This event is open for the following classes:

- |                   |                       |
|-------------------|-----------------------|
| • Flying Dutchman | Class Event           |
| • Javelin         | Class Event           |
| • J/22            | European Championship |
| • J/24            | Class Event           |
| • J/70            | Class Event           |
| • J/80            | Class Event           |
| • MaxFun 25       | Class Event           |
| • SB20            | Class Championship    |

The notation '[NP]' in a rule means that a boat may not protest another boat for breaking that rule. This changes RRS 60.1.

## Classes in this NOR are jointly referred to as Fleet B

### 1 RULES

- 1.1** The event is governed by the rules as defined in The Racing Rules of Sailing (RRS). The Prescriptions of the RNWA can be found at [World Sailing - Racing Rules of Sailing](#)
- 1.2** [NP] Boats shall sign out and in each day. Boats failing to comply will be penalized without a hearing. A detailed procedure per class and the penalty system is described in the sailing instructions.
- 1.3** [DP] For all classes the World Sailing Offshore Special Regulations (OSR) Appendix C applies in addition to the class rules.

The following also applies if similar requirements are not included in the class rules:

- Each crewmember shall wear an approved personal flotation device of at least CE50 Newton standard, or equivalent
  - Boats shall have an extra tow rope of at least 7 meters length and at least 8 millimeters of diameter attachable to the front of the boat.
  - Each boat shall carry at least one approved personal emergency signal (flare)
  - A magnetic or electronic compass is required
  - A VHF device and GPS are required.
  - **For Flying Dutchman and Javelin only:** Each crewmember shall wear wet or dry suit and shall carry at least one approved personal emergency signal on his body at all times while afloat.
- 1.4** Boats shall only leave their berth with permission of a member of the Race Committee.
- 1.5** If there is a conflict between languages the English text will take precedence.
- 1.6** Every person on board who has his domicile in the Netherlands shall have the appropriate license.
- 1.7** The GDPR declaration which can be found at [GDPR - Jachtclub Scheveningen \(powered by e-captain.nl\)](#)
- 1.8** RRS Appendix T, Arbitration, applies.

### 2 SAILING INSTRUCTIONS

- 2.1** The Sailing Instructions will be available on the event website on or before Monday 19 May 2026. Other documents governing the event will be published with the Sailing Instructions.

### 3 COMMUNICATION

- 3.1** The official notice board is online only and located at:  
<https://manage2sail.com/nl-NL/event/NSR2026#>

- 3.2** Communications with competitors and support persons: The event may use WhatsApp groups for communications purposes. The content of information given via WhatsApp is service to the competitors and will be no ground for redress. Links and QR code are as follows:

<https://chat.whatsapp.com/IcHRGWWiolx5KO1bj9e0a2>

NSR2026AllClasses  
WhatsApp-group



- 3.3** On the water, the race committee may make courtesy broadcasts to competitors on VHF radio. The channel will be stated in the SI. The content of information given over the VHF channel is service to the competitors and will be no ground for redress.
- 3.4** Briefings, team leader meetings and hearings may be conducted using an online video meeting application.
- 3.5** [DP] While racing, except in an emergency or when using equipment provided by the race committee or Organizing Authority, a boat shall not make voice or data transmissions and shall not receive voice or data communication that is not available to all boats.

## **4 ELIGIBILITY AND ENTRY**

- 4.1** The regatta is open to all entries from classes stated on the title page of this Notice of Race. With respect to our operational capacity, the OA will decide not later than April 1, 2026 which of the mentioned classes can participate in the 2026 edition. The number of complete registrations per class (which include payment) will weigh heavily in the OA's decision. At least 20 completed registrations are required at April 1 for the event (fleet B) to go through.
- 4.2** Minimum number of entries to establish a separate class is 6, based on the number of paid entries on May 1, 2026, although the OA may accept lower numbers. Alternatively, classes may be cancelled or combined on a rating basis or started together, such at the discretion of the OA. The entry fees for canceled events will be refunded.
- 4.3** Eligible boats may enter by registration with the Organizing Authority at the website <https://manage2sail.com/nl-NL/event/NSR2026>. To be considered an entry in the event, a boat shall complete all registration requirements and pay all fees
- 4.4** By entering minors under the age of 18 years, the person in charge declares that the parent or guardian of said minor agrees with the entry and shall submit a signed Parent/Guardian declaration as part of the entry. The Parent/Guardian declaration form can be downloaded from the notice board. And must be completed and returned to the Regatta Office during registration.
- 4.5** Online entry for all classes is open from Saturday January 3, 2026 and closes on Wednesday May 16, 2026, 18:00 (local time).
- 4.6** Competitors that have entered after Wednesday May 16, 2026 shall only be accepted after written approval of the Organizing Authority.

- 4.7** Competitors can request a cancellation of their entry by sending the Organizing Authority an email to [info@nsr.nl](mailto:info@nsr.nl). In case such a request is made on or before Wednesday April 22, 2026, 24:00 (local time) and is accepted by the Organizing Authority, the entry fee will be reimbursed after deduction of an administrative fee of €50.00. Cancellation will only be accepted in case of boat damage or personal injury which makes participation not possible.

## 5 FEES

- 5.1** Fees are stated in Euro and include any local taxes. The entry fee is only payable online.

Class	Entree fee on or before 1 April	Entry fee after 1 April
Flying Dutchman, Javelin, J/24, J70, J80, Maxfun 25 and SB20	€ 225	€ 250
J22 European Championship	€ 325	€ 350

- 5.2** The entry fee includes:  
 Crane facilities for Small Keelboats (Single hoist only, boats requiring a sling will need to contact [www.nautischcentrumscheveningen.com](http://www.nautischcentrumscheveningen.com) for crane facilities).  
 For J22 the sailors meal, date to be announced later.

## 6 [DP][NP] ADVERTISING AND IDENTIFICATION

- 6.1** Boats may be required to display bow numbers, backstay flags, competitor bibs and advertising chosen and supplied by the Organizing Authority.
- 6.2** The Organising Authority may require boats to carry tracking and timing devices according to the Sailing Instructions.

## 7 SCHEDULE

- 7.1** Opening times Regatta Office

Date	Time	What	Location
Friday May 22	14:00-21:00	Registration / Information	Scheveningen
Saturday May 23	08:30-18:00	Registration / Information	Scheveningen
Sunday May 24	08:30-18:00	Registration / Information	Scheveningen
Monday May 25	08:30-18:00	Registration / Information	Scheveningen

- 7.2** Dates of racing

Date	All classes
Saturday May 23	Inshore races
Sunday May 24	Inshore races
Monday May 25	Inshore races

On Friday May 22 a practice race for J22 European Championship is scheduled

### 7.3 Number of races

Class	May 23	May 24	May 25
Flying Dutchman	3	4	3
Javelin	3	4	3
J/22	3	4	3
J/24	3	4	3
J/70	3	4	3
J/80	3	4	3
MaxFun 25	3	4	3
SB 20	3	4	3

### 7.4 The scheduled time of the first warning signals each day:

Date	Time
Saturday May 23	11:25
Sunday May 24	10:55
Monday May 25	10:55

### 7.5 On the last day of the regatta no warning signal will be made after 15:00.

## 8 [DP] EQUIPMENT INSPECTION

**8.1 [DP]** Boats and equipment may be subject to inspection at any time during the regatta.

**8.2** Classes may organize measurement or equipment inspection. This will be announced and specified in the Sailing Instructions.

**8.3 [DP]** Boats shall also comply with RRS 78.1 when presented for inspection.

## 9 VENUE

**9.1** The Regatta Office is located on the first floor of the club house of Jachtclub Scheveningen, Hellingweg 98, 2583 WH Scheveningen, The Netherlands.

**9.2** Addendum A shows the location of the regatta office and harbor

**9.3** Addendum B shows the location of the inshore racing areas.

## 10 COURSES

**10.1** The course to be sailed, will be windward/leeward or trapezoid courses

**10.2** The course descriptions are included in the sailing instructions.

## 11 PENALTY SYSTEM

**11.1** RRS 60.3 is supplemented as follows: On the last day of the regatta, it is not possible to lodge a measurement protest for deviations of the measurement rules which could have been protested earlier in the series.

## **12 SCORING**

- 12.1** Four races are required to be completed to constitute a series for each of the individual series prizes.
- a) When fewer than 5 races have been completed, a boat's series score will be the total of her race scores.
  - b) When 5, 6, 7 or 8 races have been completed, a boat's series score will be the total of her race scores discarding her worst score.
  - c) When 9 or more races have been completed, a boat's series score will be the total of her race scores, discarding her worst two scores.

## **13 [DP] SUPPORT PERSON VESSELS**

- 13.1** Support vessels with team leaders and other support personnel shall stay outside areas where boats are racing from the time of the starting sequence until all boats have finished, or the race committee signals a postponement, general recall or abandonment.

## **14 CHARTERED OR LOANED BOATS**

- 14.1** A chartered or loaned boat may carry national letters or a sail number in contravention of her class rules, provided that the race committee has approved her sail identification before the first race.

## **15 [NP][DP] BERTHING**

- 15.1** (Support) Boats and trailers shall be kept in their assigned places in the boat park or harbor.

## **16 RISK STATEMENT**

- 16.1** **RRS 3 states: 'The responsibility for a boat's decision to participate in a race or to continue to race is hers alone.' By participating in this event each competitor agrees and acknowledges that sailing is a potentially dangerous activity with inherent risks. These risks include strong winds and rough seas, sudden changes in weather, failure of equipment, boat handling errors, poor seamanship by other boats, loss of balance on an unstable platform and fatigue resulting in increased risk of injury. Inherent in the sport of sailing is the risk of permanent, catastrophic injury or death by drowning, trauma, hypothermia or other causes.**
- 16.2** The organizing authority will not accept any liability for material damage or personal injury or death sustained in conjunction with or prior to, during, or after the regatta.

## **17 [NP]INSURANCE**

- 17.1** Each participating boat shall be insured with valid third-party liability insurance with a minimum cover of Euro 1.500.000 per event or the equivalent.

## **18 PRIZES**

- 18.1** Prizes will be awarded to the top 3 boats in each class. Special North Sea Regatta perpetual trophies will be available. A description of these trophies will be published on the online notice board at [www.manage2sail.com](http://www.manage2sail.com).

## FURTHER INFORMATION

North Sea Regatta

[info@nsr.nl](mailto:info@nsr.nl)

[www.nsr.nl](http://www.nsr.nl)

+31 6 20 99 27 60 (during opening hours Regatta Office)

Information for press: [media@nsr.nl](mailto:media@nsr.nl)

### MOORING FACILITIES SCHEVENINGEN

Contact details Harbour Master Scheveningen:

Fabian Buys: [havenmeester@jachtclubscheveningen.com](mailto:havenmeester@jachtclubscheveningen.com) or via telephone +31 6 53293137

For emergencies, like clearing a propeller or boats retiring early, a crane is available at the [www.nautischcentrumscheveningen.com](http://www.nautischcentrumscheveningen.com)

For storage of containers, equipment vans and support trailers please contact:

[www.nautischcentrumscheveningen.com](http://www.nautischcentrumscheveningen.com)

### ACCOMMODATION

Competitors shall make their own housing arrangements. Accommodation can be arranged via: [www.denhaag.com](http://www.denhaag.com)

### SOCIAL

The 2026 edition of the NSR inshore will include an extensive shore programme. Please refer to [www.jachtclubscheveningen.com/nsr](http://www.jachtclubscheveningen.com/nsr) for further information.



## NOTICE OF RACE ADDENDUM A

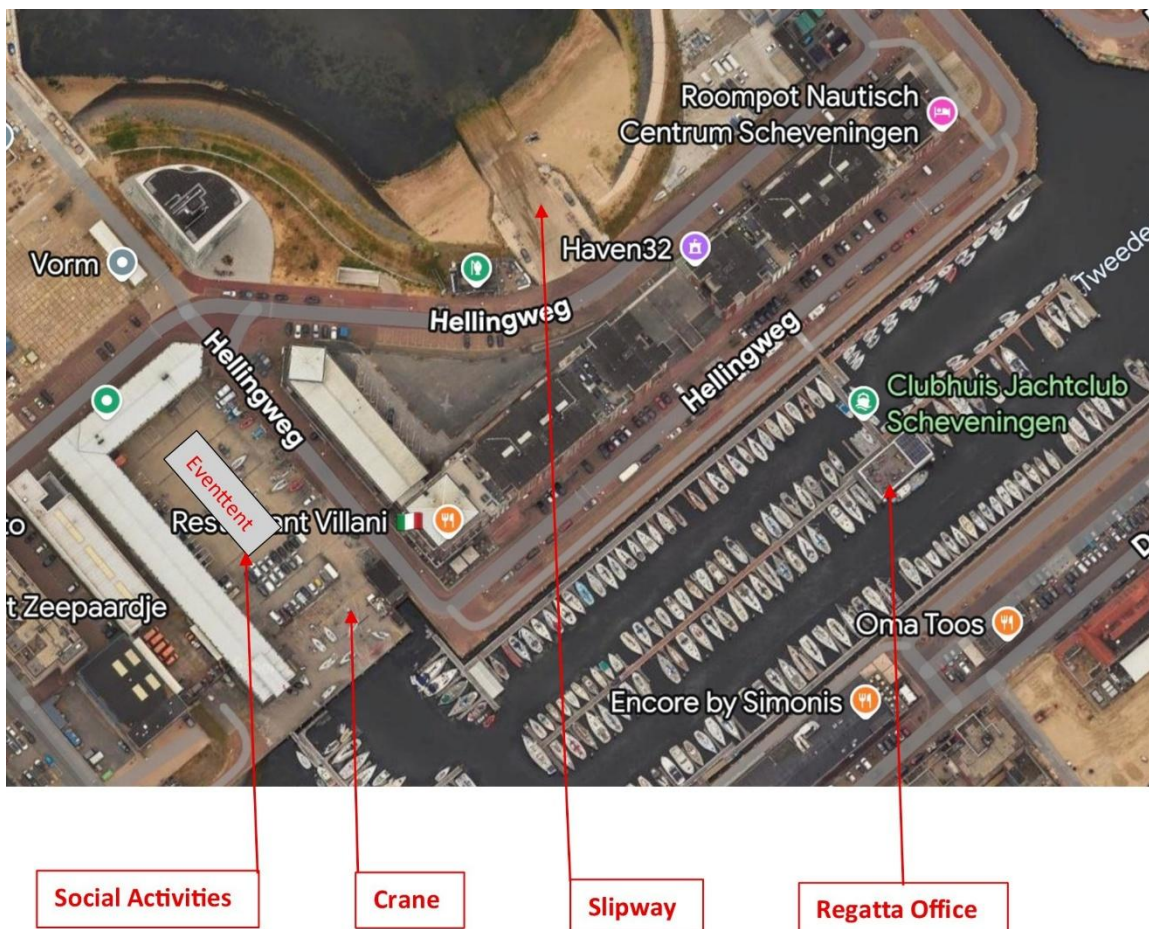
Location of the venue

The Regatta will be held at the Jachtclub Scheveningen

Address: Hellingweg 98, 2583 WH The Hague, The Netherlands

Venue website: [www.jachtclubscheveningen.com](http://www.jachtclubscheveningen.com)

Event website: [www.nsr.nl](http://www.nsr.nl)



## NOTICE OF RACE ADDENDUM B

Approximate location of the inshore racing areas:

